



2025 Elected Officials Forum: *Coordination & Preparation*

Harvey F. De La Torre
General Manager

Municipal Water District of Orange County

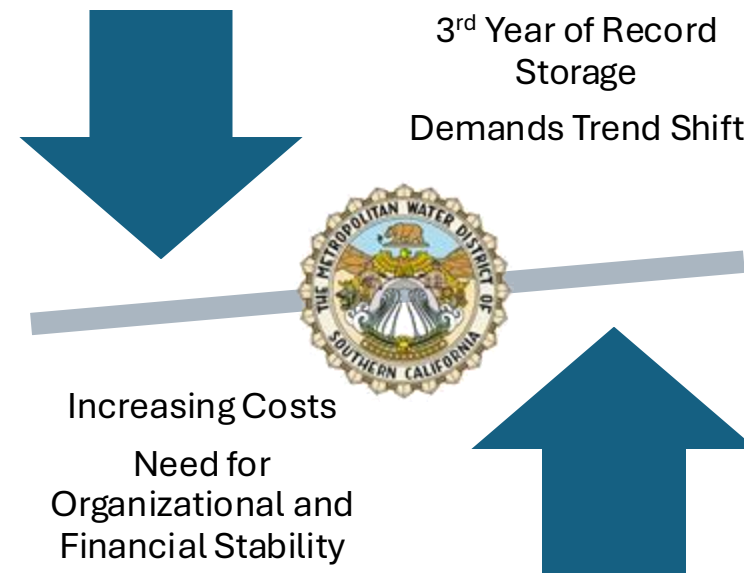
Coordination & Preparation Agenda

- 01 Imported and Regional Water Supplies
- 02 MWDOC Budget and Upcoming Initiatives
- 03 Spotlight on Coordination:
Value of MWDOC's Shared Services
- 04 *Questions & Answers*
- 05 Spotlight on Preparation:
Water Emergency Response Organization
of Orange County (WEROC)
- 06 *Questions & Answers*



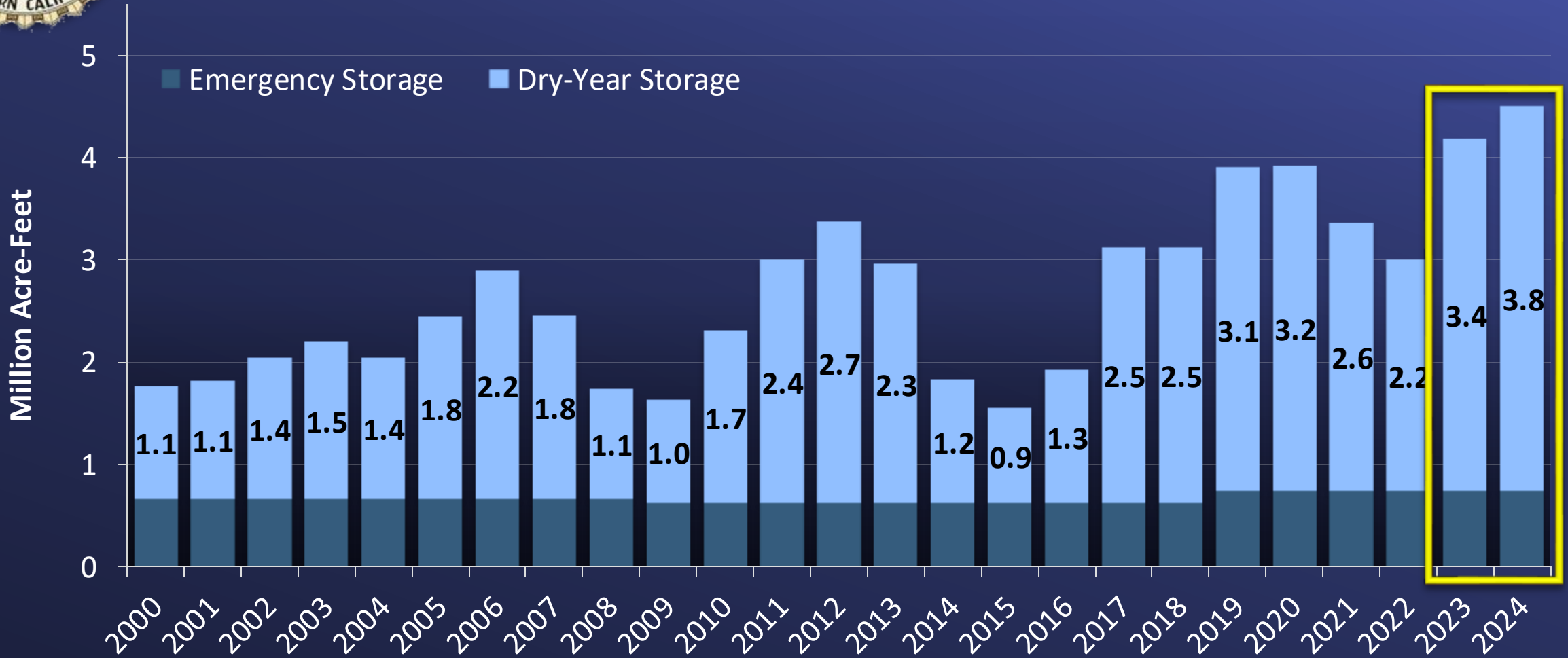


Setting the Stage Imported and Regional Water Supplies





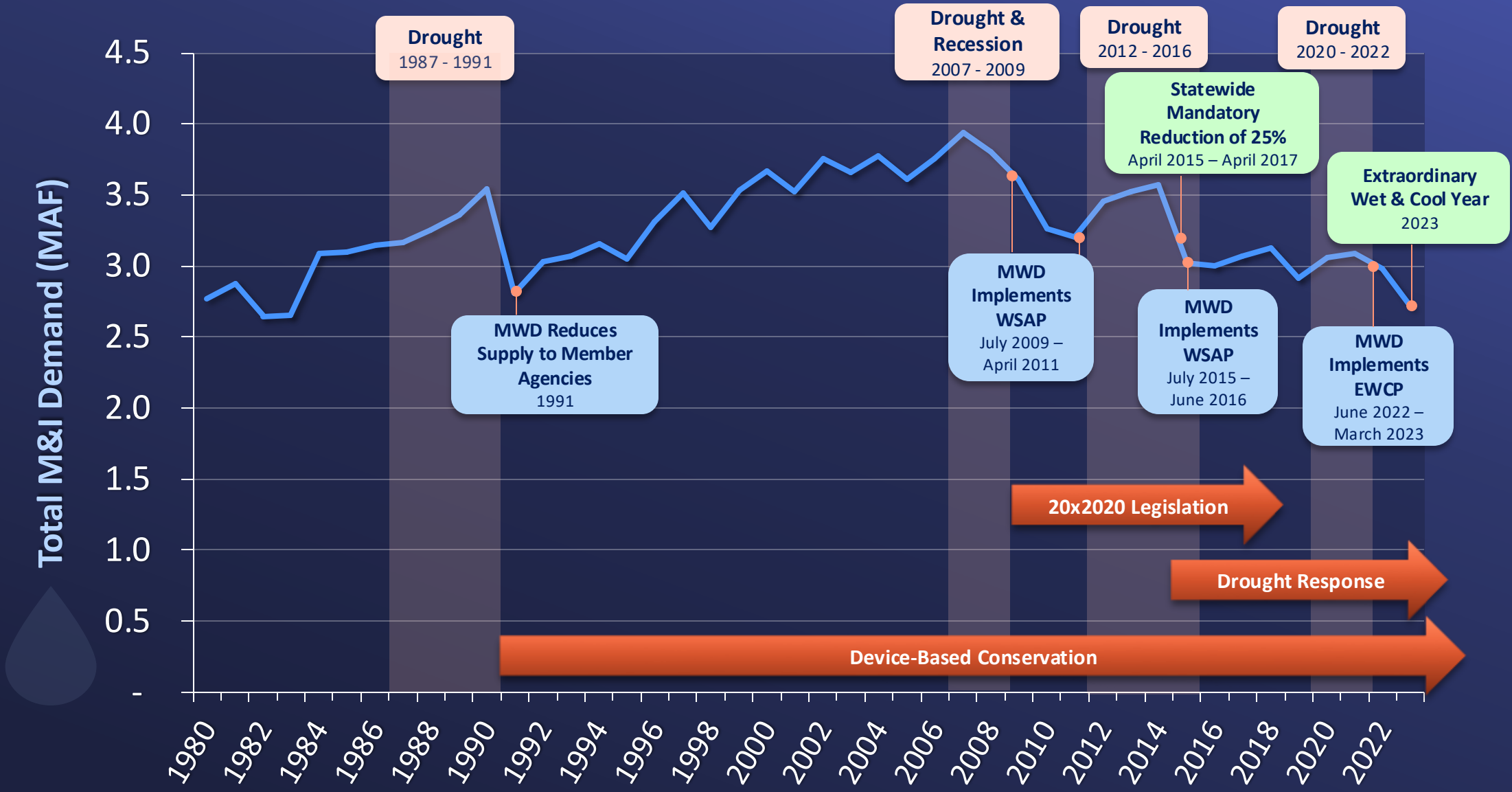
For the 3rd Straight Year, Metropolitan anticipates Record level of Storage



Note:

2024 end-of-year balance is preliminary as it is subject to USBR final accounting.

At the same time, we Have Witnessed Shift In Demands



WSAP = Water Supply Allocation Plan
 EWCP = Emergency Water Conservation Program



In collaboration MWDOC and other member agencies, we are advancing discussions to ensure the Metropolitan *business model*:

Key Areas of Focus for Future Success:

- Financial planning
- Water resource management
- Operations



FY 2025-2025 MWDOC Budget and Upcoming Initiatives

RATES

Fixed Meter Charge @ \$15.25

OCWD Contribution @ \$414,371

YTY Increase of 3.4% or \$0.50

YTY Increase of 2.2% or \$8,908

What MWDOC Provides

We are driven to provide:

Fiscal Responsibility & High Value

- 🔹 Metropolitan Representation
- 🔹 Regional Leadership & Advocacy
- 🔹 Regional Engineering, Planning, & Studies
- 🔹 Development, Implementation & Evaluation of WUE and WLC Programs
- 🔹 Emergency Preparedness, Coordination, Mutual Aid (WEROC)
- 🔹 Facilitate Development of Local Resources
- 🔹 Regional Public Messaging Coordination & Outreach
- 🔹 Legislative Coordination & Advocacy
- 🔹 Regulatory Compliance Support
- 🔹 Water Policy Clearinghouse & Informational Hub
- 🔹 Inter-Agency Dialogue
- 🔹 Facilitation of Collective Resources

Key Items Incorporated FY 2025-26 Budget

Program Enhancements

- Grants training led by an experienced and successful grant consultant; MWDOC and Member Agency participants will learn strategies for crafting proposals, understanding funding agency priorities, and developing program/project budgets.

Form 700 Training

- Form 700 Training - basic training for Form 700 filers on understanding the conflict-of-interest code, disclosure obligations, guide to reporting each schedule, and purpose of disclosure. Open for Elected Officials in Orange County, to be held in January 2026.

Key Items Incorporated FY 2025-26 Budget

Regulatory Compliance

- Develop updated Urban Water Management Plans, including consultant support for MWDOC (Core-funded) and Member Agencies (Choice-funded).
- Conservation as a California Way of Life support, including one-on-one consultant support for readiness assessments, compliance plans, landscape area measurements, CII Customer Classifications and BMP Implementation Plans

Technology Infrastructure

- The addition of GIS support resources will strengthen MWDOC Core and Choice services.
 - Provides resource needs for the development of Water Use Efficiency, Water Loss Control, Engineering, and Emergency Response uses.



Spotlight on Coordination:

Value of MWDOC's Shared Services

MWDOC's Services Provide Shared Value

- Water Quality Initiatives
- Supplemental Reliability Analysis of Water Supplies
- MET Shutdown Planning

Reliability & Engineering



- School Program (K-12) & WEEA
- Policy Dinners & OC Water Summit
- MWDOC's 75th Anniversary
- Agency Spotlight Videos

Communications & Education



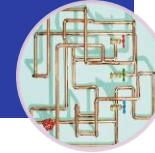
- Legislation Advocacy
- Regulatory Leadership
- Grant Tracking

Governmental Affairs



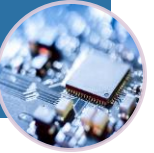
- Technical Assistance Program
- Audit Validation
- Leak Detection
- Customer Meter Accuracy, Pressure Surveys

Water Loss Control



- Enterprise Resource Planning
- District Cyber Security
- Rebate Check Processing

Finance & IT



- MET Business Model and Long-Term Financial Plan
- Climate Adaptation Master Planning
- Local Resources Program

MET Issues & Policy



- Turf Removal & Design Assistance
- Device Incentives
- Assist MAs in meeting their State Conservation Requirements

Water Use Efficiency



- Response Readiness
- Training and Plan Development
- Emergency Response

WEROC & Emergency Planning



- From 700s Filing Training
- Elected Officials Forum
- Shared Service Contact Support
- Staff Development

Board & Support Services



Spotlight: Leak Detection Program

- Administered by MWDOC's **Water Loss Control (WLC)** team
- SB 555 (Wolk) Water Loss Requirements adopted in 2015
- Since 2019, MWDOC has surveyed over **5,100 miles** of Retail Agency Distribution System Pipes throughout Orange County.
- To date, the Leak Detection Program has located **2,434 leaks** and saved **746 acre-feet** of water a year, or roughly enough to serve 2,238 Orange County households annually.
- By stopping these leaks early, local water agencies have saved approximately **\$609,934** for businesses and residents roughly \$96,630 annually.



Video depicting a hidden leak found by MWDOC's WLC technicians while surveying.

Spotlight: Grants Program



TOTAL PROGRAM SUCCESS (JULY 2018 – JANUARY 2025)



Over \$110 million in Funding / 27 Grant Applications Awarded

~\$77 million Loan Funding Selected

~\$58 million Grant/Loan Funding Pending for 4 Applications

25 Agencies & 255 Projects on the Project List

188 Funding Programs in the Monthly Report

108 Go/No-Go Evaluations Completed

3,700 Funding Inquiry Emails

283 Funding Update Calls Conducted with Member Agencies

Monthly Activities



Project List, Monthly Reporting & Agency Calls



Go/No-Go Evaluations & Communication



Grant Application Writing or Review (Under Separate Contract)

Spotlight: Water Quality and Operations Management Workshops

- 💧 Orange County Water Distribution System & Operations Overview by Metropolitan
 - 🔥 Imported Water System Reliability & Capabilities
 - 🌱 State Water Project
 - 🌱 Colorado River Aqueduct
- 💧 Nitrification Management Education
 - 🔥 Biology of Nitrification
 - 🔥 Water Chemistry
 - 🔥 August 2023 Nitrification Event (Tropical Storm Hilary)
- 💧 Overview of OC agency-operated pipelines
 - 🔥 Operational challenges
 - 🔥 Opportunities for Collaboration
- 💧 Provides a forum for enhanced collaboration on water quality operations between Metropolitan, MWDOC, and the retail agencies in Orange County

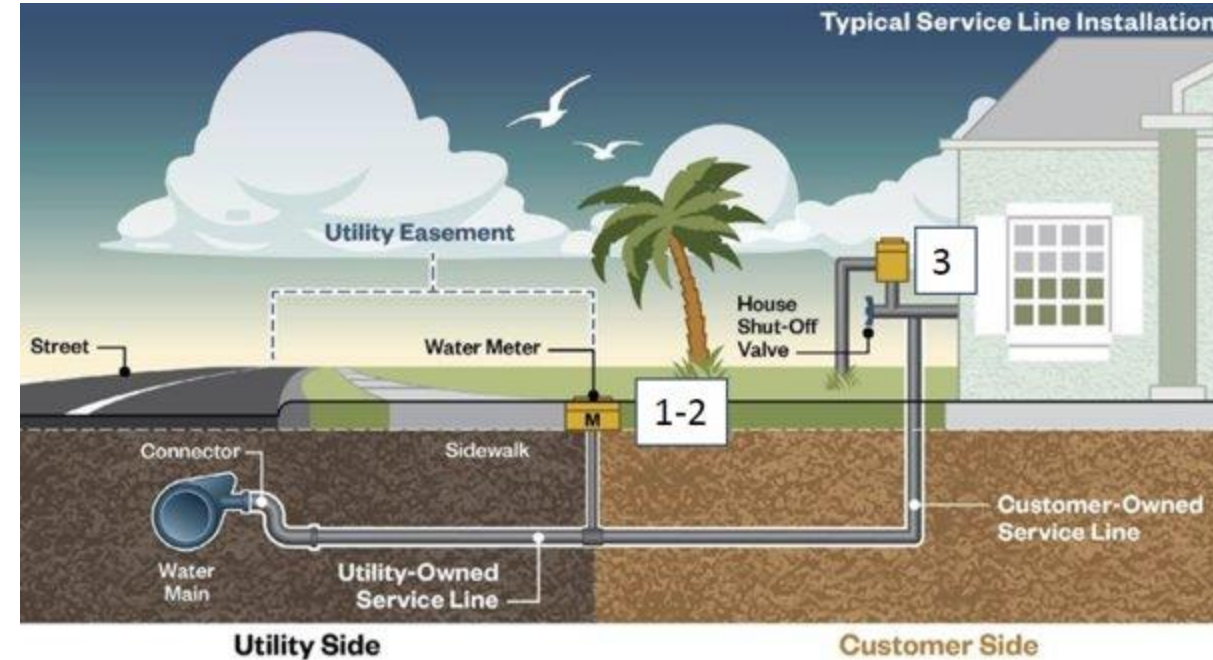


Spotlight: Lead & Copper Rule Revisions - Service Line Inventories

- US EPA requirements:
 - Water systems develop an inventory to **identify service line materials** for all service lines connected to the public water distribution system, regardless of property ownership status by Oct. 16, 2024.

13 OC agencies participated in the MWDOC inventory assistance program

- All 13 agencies received **'Non-Lead Designation'** from the State
- Agencies enjoyed **~30% volume discount** (avg. cost \$177,000)





Questions & Answers



Spotlight on Preparation:

Water Emergency Response Organization of Orange County (WEROC)



The Westin



It Can Happen Here
Preparedness, Relationships and
Coordination are Key



Elected Official - April 9, 2025

What type of Water Agencies are there in California



City Owned

Special
Districts

Private &
Mutuals

County
Service
Area

Specific Regulations



In California, water agencies are governed by specific regulations:

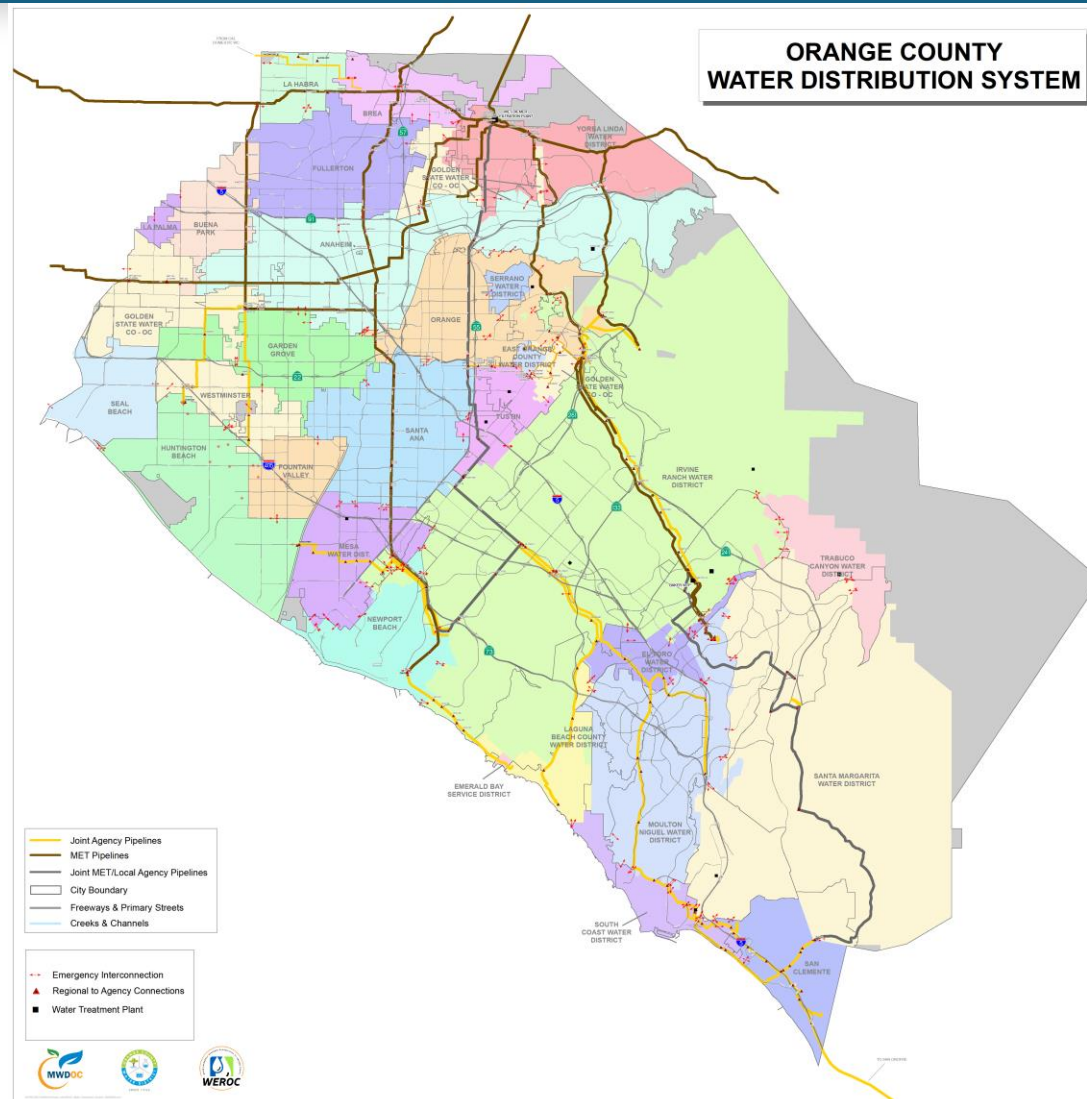


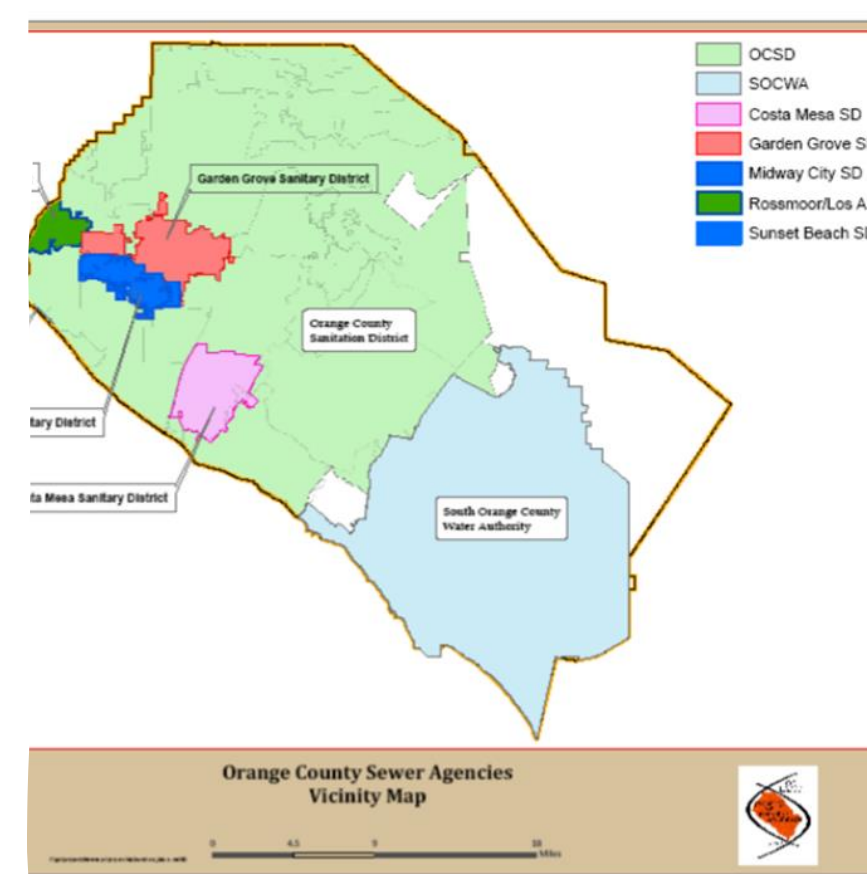
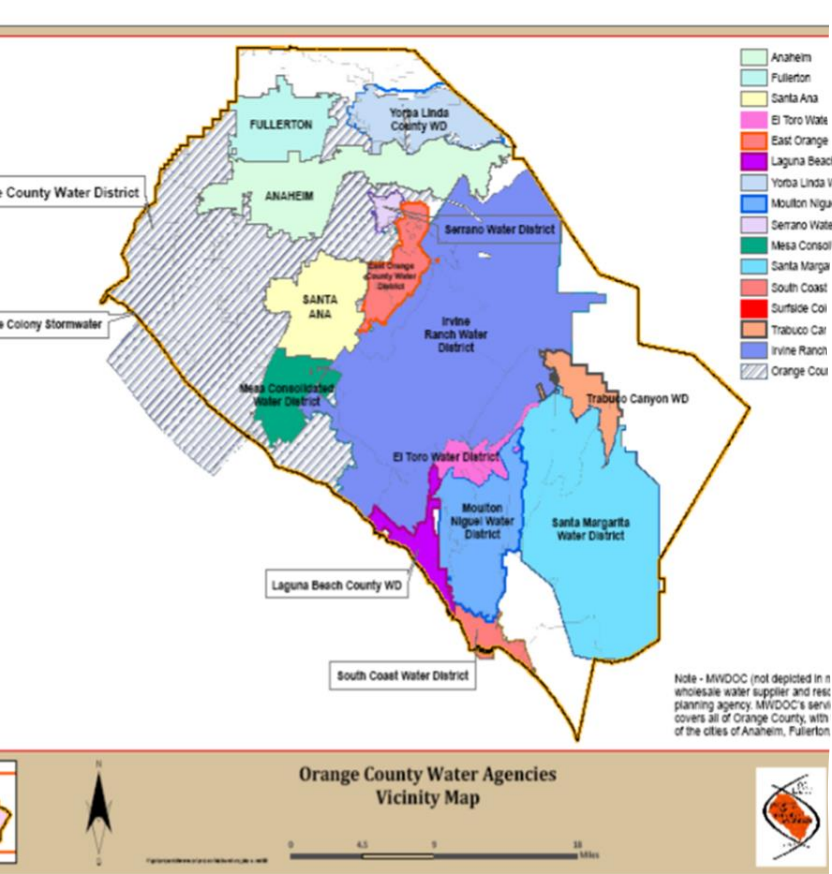
Minimum Pressure Standards



Fire-Flow Requirements for Single-Family Residences

How Water Works in Orange County





Orange County Water and Wastewater

- Interdependencies
 - 19 Special Districts and 17 Cities
 - Total of 3040 employees take care of the entire Water and Wastewater Infrastructure
 - 2124 employees (Special Districts Only)

WEROC Mission Statement

WEROC is charged with supporting the resiliency of Orange County's water and wastewater agencies, and the community it serves by working with these agencies and the County to build, sustain, and improve the capability to mitigate against, prepare for, respond to, and recover from threatened or actual natural disasters, acts of terrorism, or other man-made disasters.

Vision Statement

Your Resiliency is Our Legacy



WEROC Signatories - 36 Total

CITIES

Anaheim
Brea
Buena Park
Fountain Valley
Fullerton
Garden Grove
Huntington Beach
La Habra
La Palma
Laguna Beach
Newport Beach
Orange
San Clemente
Santa Ana
Seal Beach
Tustin
Westminster

SPECIAL DISTRICTS

Costa Mesa Sanitary District
East Orange County Water District
El Toro Water District
Emerald Bay Service District
Irvine Ranch Water District
Laguna Beach County Water District
Mesa Water District
Midway City Sanitary District
Moulton Niguel Water District
Municipal Water District of OC
Orange County Sanitation District
Orange County Water District
Santa Margarita Water District
Serrano Water District
South Coast Water District
South OC Wastewater Authority
Trabuco Canyon Water District
Yorba Linda Water District

PRIVATE

Golden State Water Company

*4 Mutuals not part of agreement



The WEROC Foundation



Representation

Local, Regional, State and Federal Meetings
 WEROC became an integral member of the County's Operational Area

Recovery Support

FEMA Public Assistance Process
 Post Event Secondary Impacts Planning

Preparedness

Training, Planning and Exercises
 Day to Day Member Agency Support
 WEROC EOC Preparedness
 Required Planning and Plans

Emergency Response

Information Collection/Intelligence Sharing
 Inter-Agency Cooperation
 Communication Systems
 Resource Needs
 WEROC EOC

Section 1

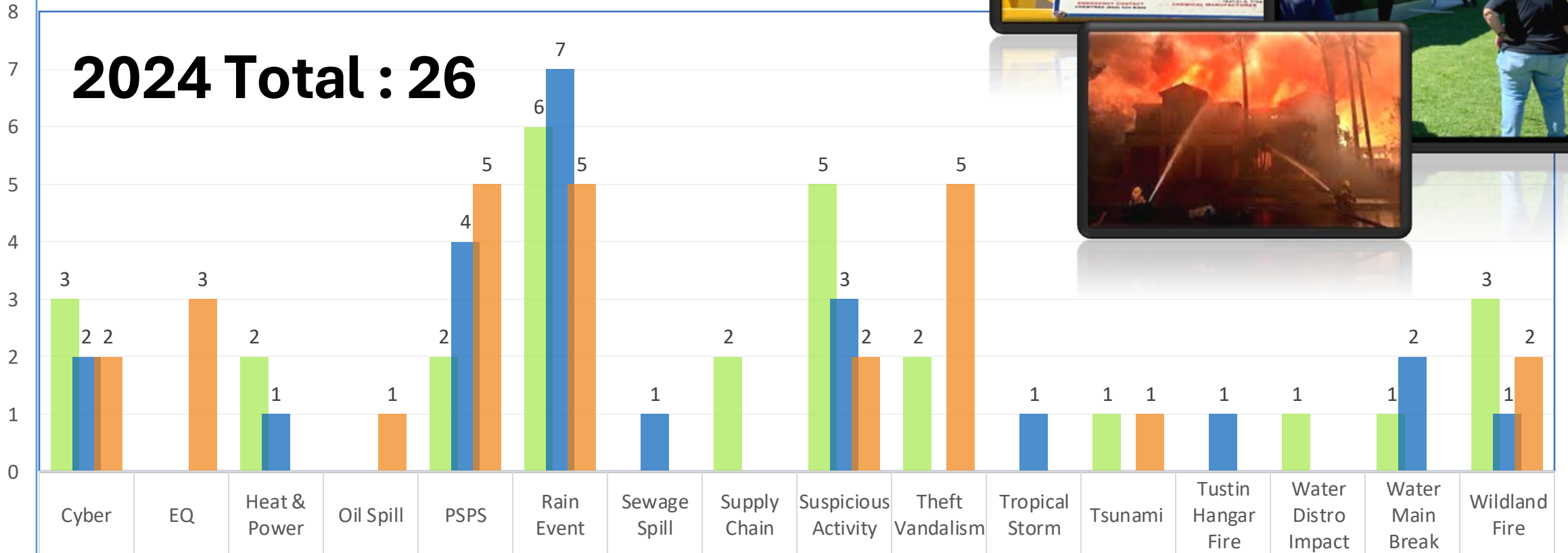
Hazard Type	Probability	Affected Area	Impact		Total Score	Risk Level
			Primary Impact	Secondary Impact		
Human-Caused Hazards - Power Outage	4	3	4	4		
Wildfire	4	3	3	4		
Human-Caused Hazards - Terrorism (Cyberthreat)	4	3	3	2	44.0	High
Seismic Hazards - Seismic Shaking	3	3	4	4	43.2	High
Seismic Hazards - Liquefaction	3	3	4	4	43.2	High
Severe Weather - Windstorm	4	4	2	1	40.8	Medium
Severe Weather - Extreme Heat	3	3	3	3	36	Medium
Severe Weather - Drought	4	4	1	1	35.2	Medium
Dam/Reservoir Failure	2	3	4	4	28.8	Medium
Flood	3	3	2	1	25.8	Medium
Coastal Hazards - Coastal Storm	3	2	2	2	24.0	Medium
Coastal Hazards - Coastal Erosion	3	1	2	2	19.2	Medium
Seismic Hazards - Fault Rupture	2	1	4	2	18.4	Medium
Geological Hazards - Landslide and Mudflow	2	2	2	3	18	Medium
Coastal Hazards - Sea Level Rise	3	1	2	1	16.2	Medium
Human-Caused Hazards - Contamination/ Saltwater Intrusion	1	2	3	4	11.4	Low
Human-Caused Hazards - Terrorism (MC)	1	1	3	3	8.8	Low
Human-Caused Hazards - Hazardous Materials	1	1	2	3	7.4	Low
Urban Fire	1	1	2	1	5.4	Low
Geological Hazards - Land Subsidence	1	1	1	2	5	Low
Geological Hazards - Expansive Soils	1	1	1	2	5	Low
Coastal Hazards - Tsunami	1	1	1	1	4	Low

Scores are based on a scale from 1 to 4, where 4 is the highest score and 1 is the lowest. Refer to Table 3-3 for additional information. The total score is based on an equation that weights categories by importance. Refer to Table 3-3 for additional information.

Incident Coordination and Activations 2022-2024



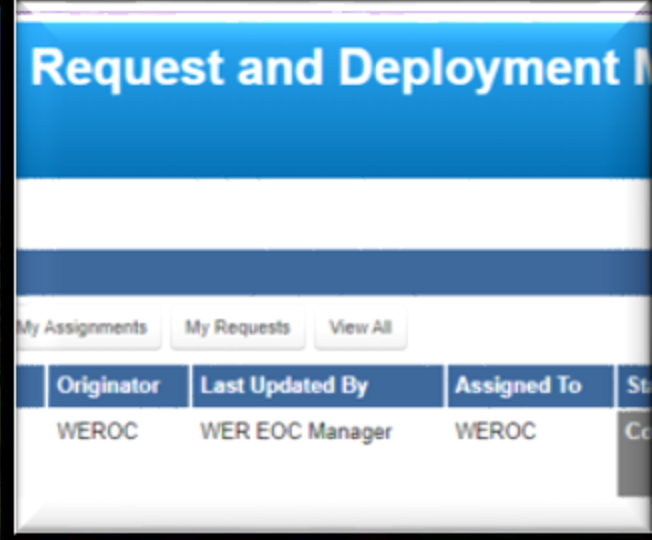
2024 Total : 26



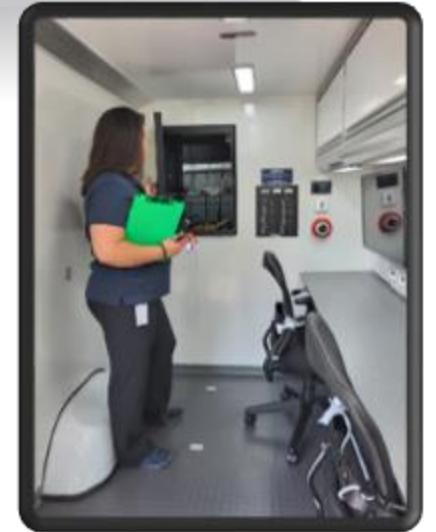
	2022	2023	2024
Cyber	3	2	2
EQ	0	0	3
Heat & Power	2	1	0
Oil Spill	0	0	1
PSPS	2	4	5
Rain Event	6	7	5
Sewage Spill	0	1	0
Supply Chain	2	0	0
Suspicious Activity	5	3	2
Theft Vandalism	2	0	5
Tropical Storm	0	1	0
Tsunami	1	0	1
Tustin Hangar Fire	0	1	0
Water Distro Impact	1	0	0
Water Main Break	1	2	0
Wildland Fire	3	1	2

Example: WEROC Support - Fire

- ICP Agency Rep
 - Situation Status
 - Critical Information to Incident Command
 - Field Requirements
 - Briefings to Impacted Agencies
 - Mutual Aid/Resource Requests
 - WebEOC
 - County EOC Liaison
 - Initial Damage Estimates & Post Event Needs
 - Relationships Matter
- (OCFA, HCA, Sheriff, County EMD, MET, CUEA, DDW)



Our Newest Asset



Lets Talk About HeliHydrants



Blue Ridge Fire - October 2020 YLWD Heli-Hydrant

Photo Courtesy of YLWD

BUT.....

**Situations
When
Heli-Hydrants
Cannot Be
Used:**

- **Lack of Water Supply**
- **Inaccessible Locations**
- **Airspace Restrictions**
- **Unsafe Flying Conditions**

What is Adequate Supply

- **Water Pressure and Flow**
- **Damage to Infrastructure**
- **Water Contamination**
- **Access Issues**
- The **Goal** for water agencies is to ensure that the firefighting community has sufficient water to prevent the fire from spreading and to protect lives and property while simultaneously preserving the water supply for the community.



OC Notable Fires

- 1993 Laguna Fire
- 2007 Santiago Fire
- 2008 Freeway Complex Fire
- 2017 Canyon 2 Fire
- 2020 Silverado Fire
- 2020 Blue Ridge Fire
- 2022 Coastal Fire
- 2024 Airport Fire

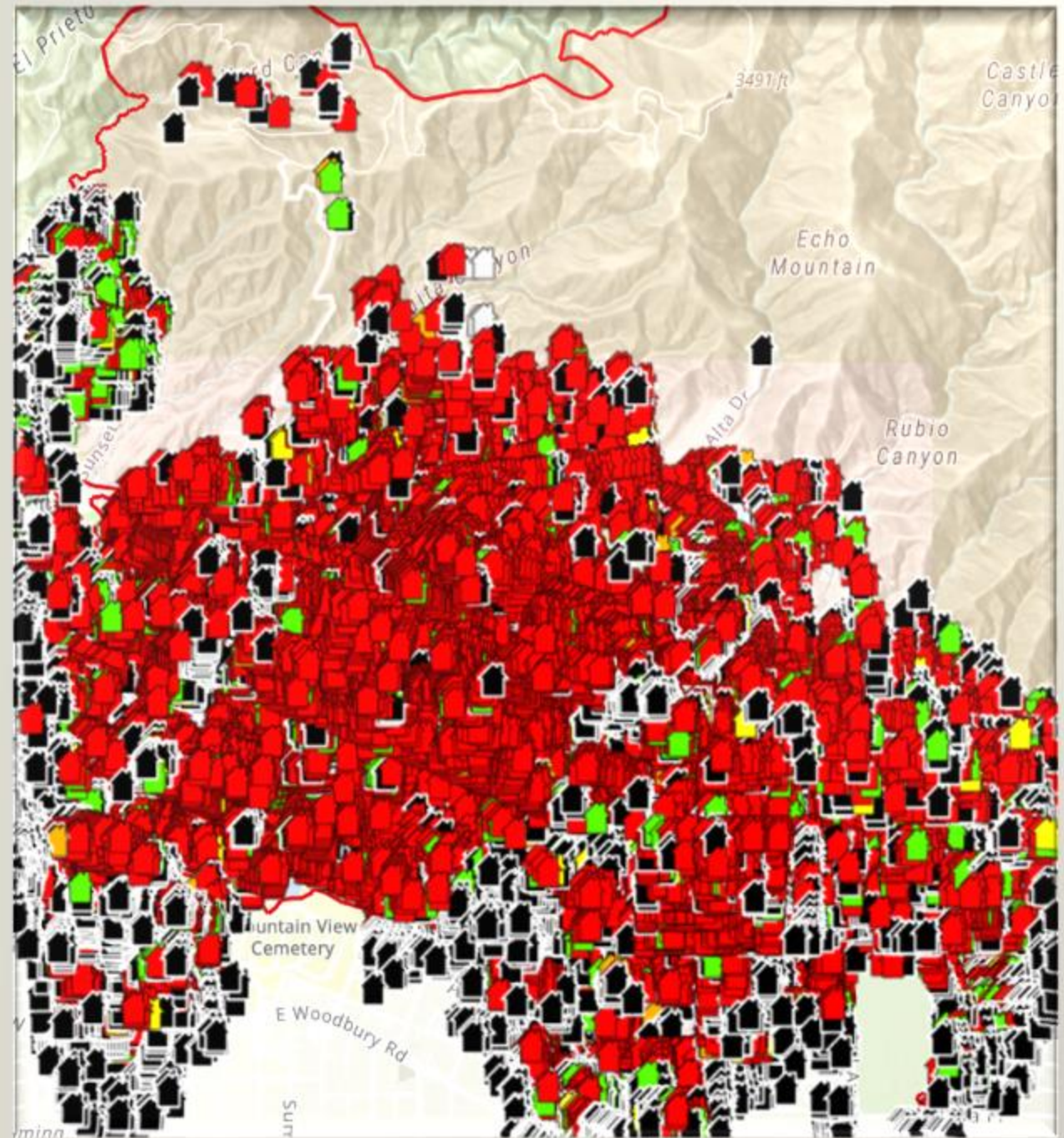
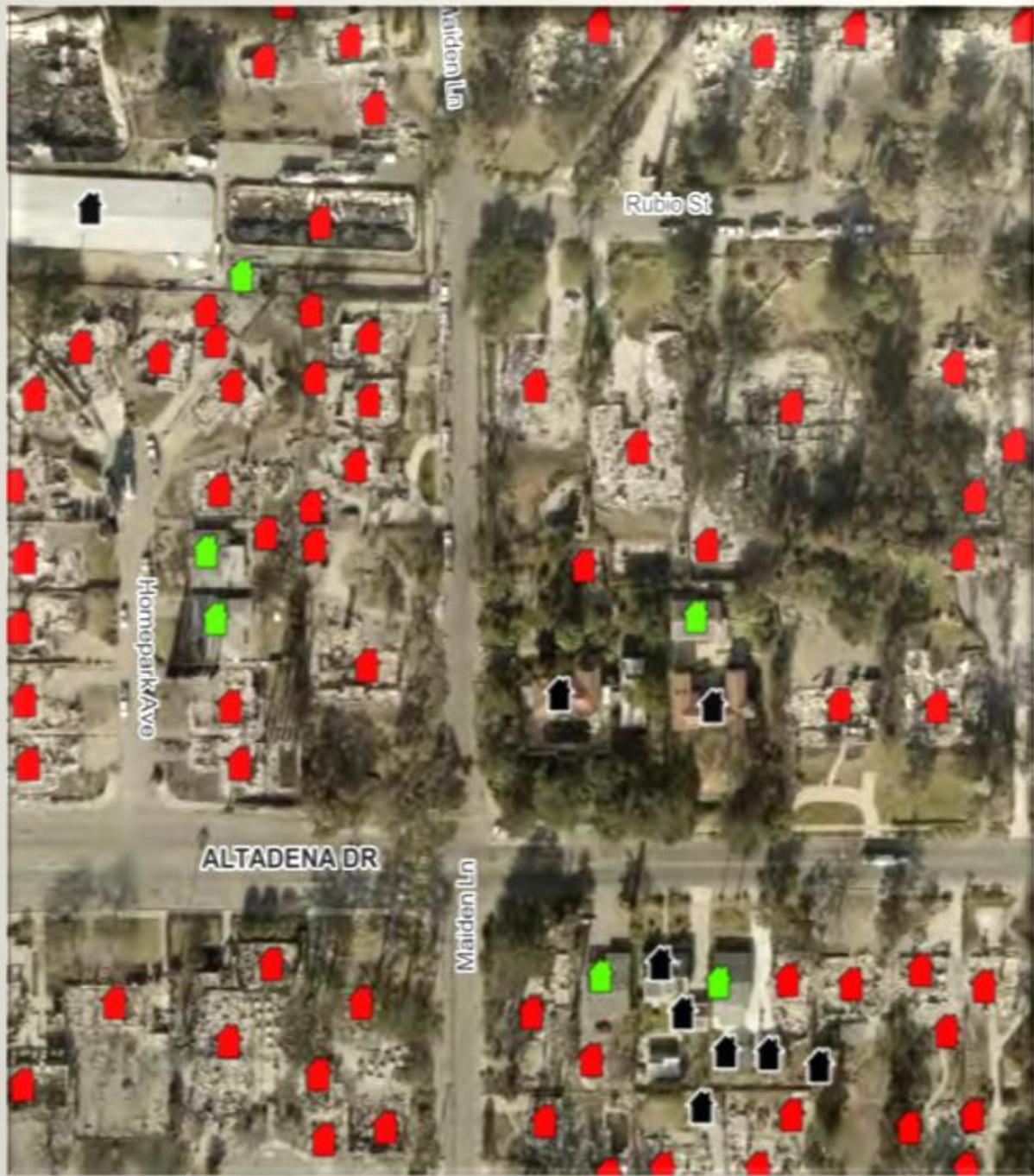


LA County 2025

Eaton Fire







Unsafe Water Notices

What are they

Who issues them?

What are the statutes and regulations assigning authority?

Who does the outreach?

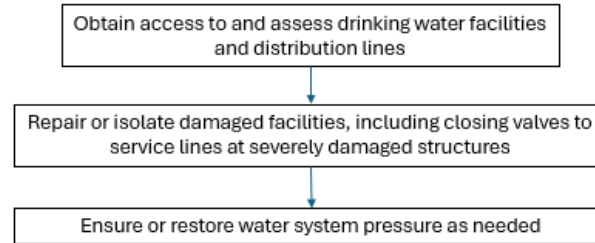
- Updated Feb 2023



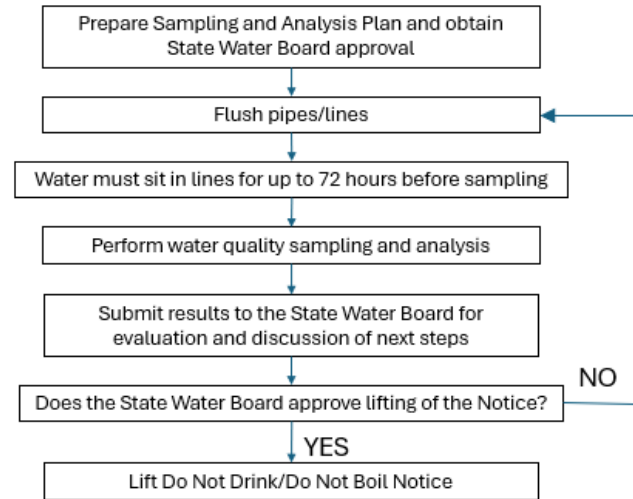
- Sections 116450 (c) and 116451 of the CHSC and Sections 64430, 64463, 64463.1, and 64465 of Title 22, California Code of Regulations (CCR), provide authority for requiring an unsafe water notice.

Process to Lift Do Not Drink/Do Not Boil Notice After a Wildfire

Stage 1: Assess and Address Damage



Stage 2: Clear System and Confirm Water Quality



Stage 3: Complete Longer-Term Repairs and/or Replacements



Water Trailers

- Water Trailers are Tricky
- Not every water truck can be used for drinking water

CITY OF NEWPORT BEACH	949 WEST 16TH STREET	NEWPORT BEACH	CA	92663	ORANGE
CITY OF HUNTINGTON BEACH	19001 HUNTINGTON BEACH	HUNTINGTON BEACH	CA	92648	ORANGE
SANTA MARGARITA WATER DISTRICT	26111 ANTONIO PARKWAY	RANCHO SANTA MARGARITA	CA	92688	ORANGE
LAGUNA BEACH COUNTY WATER DISTRICT	306 THIRD STREET	LAGUNA BEACH	CA	92651	ORANGE
IRVINE RANCH WATER DISTRICT	3512 MICHELSON DRIVE	IRVINE	CA	92612	ORANGE
CITY OF ORANGE	189 SOUTH WATER STREET	ORANGE	CA	92866	ORANGE
CITY OF TUSTIN	300 CENTENNIAL WAY	TUSTIN	CA	92780	ORANGE
MOULTON NIGUEL WATER DISTRICT	26161 GORDON ROAD	LAGUNA HILLS	CA	92653	ORANGE
CITY OF GARDEN GROVE	13802 NEWHOPE STREET	GARDEN GROVE	CA	92843	ORANGE
DS SERVICES OF AMERICA, INC.	1522 NORTH NEWHOPE STREET	SANTA ANA	CA	92703	ORANGE



13 Trailers

Deployment Average time 18-24 hours

Let analyze what the state is asking you to do

LA County Fire Actual Request



These are not licensed to haul potable water but were seen a lot around LA County

- 💧 This actually happened during the LA Fires (request for water trucks)
- 💧 4000 households average occupancy 4 people and was calculating 68 gallons per person per week
- 💧 16,000 people times 68 gallons = 1,088,000 per week, and I was able to get 41 trucks to aid, but still 26,536 and no where to store it.
- 💧 Bottled water has become the staple

Interesting Items To Consider

Yes, these happened/happening during the LA Fires

- Purchase of Extra Water
- Water Agencies Not Allowed Past Road Closures
- 2 months and 1 week for USACE/CalOES to assist with Debris Removal
- Majority of Requests to County Denied
- Mis-Information Reported Up to the Governor
- Information gathered just to get information
- ICP/JFO – Connections/Communications (water pushed away)
- Benzene and sampling all over again
- Request from residents for in house water sampling

California WARN Water/Wastewater Agency Response Network

A Network of Utilities Helping Other Utilities

Member Login



- Agreement based on the California Master Mutual Aid Agreement
- Includes approx. 85% of public and private agencies
 - Covers 90% of the population of California
- Concept of WARN within SEMS/NIMS
- Request and Coordination of mutual aid/assistance

What is Your Role?

- City vs Special District (They Are Different)
- Emergency Decision Making (Empowerment)
- Coordination with Other Elected Officials
- Public Communications
- Feedback on Legislation (Cascading Impacts)
- Take G402 Training



We are Lucky to be in
Orange County and have
a WEROC Program

Vicki Osborn

Director of Emergency Management
Water Emergency Response Organization
of Orange County
Municipal Water District of Orange County

vosborn@mwdoc.com

714-593-5010





Questions & Answers

Thank you for your attention.
Please **let us know** if you have questions.

